


# Immunostaining and Super-Resolution Imaging of Structures In Cardiac Myocytes

Shirley Zhang  
Auckland, New Zealand  
August 3, 2012

# Proposed Research

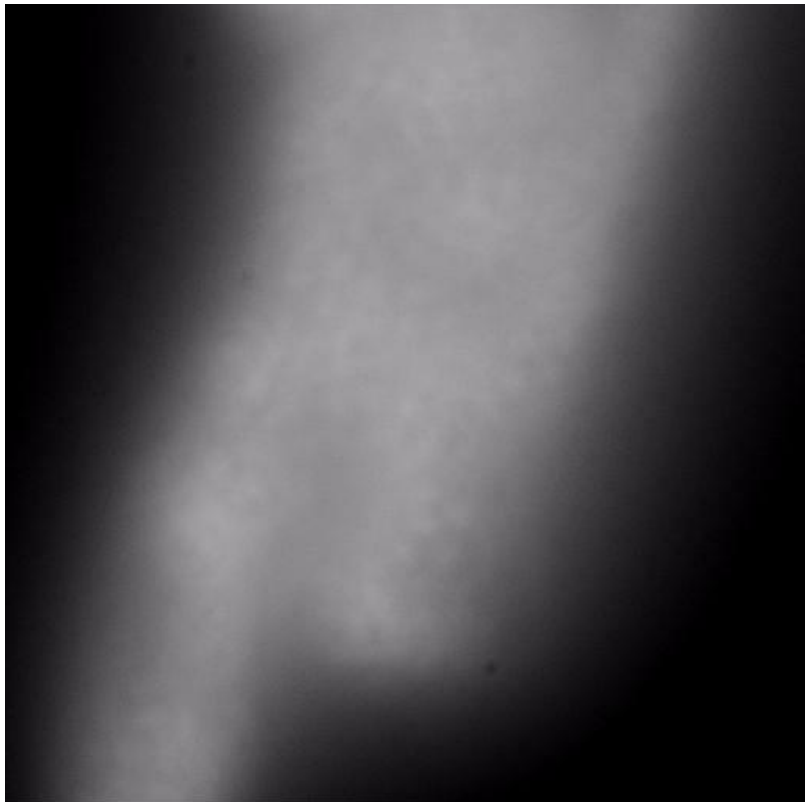


- Super-resolution fluorescent imaging of ryanodine receptors (RyR) and microtubule structures in mouse cardiac myocytes with altered expression of protein junctophilin-II
  - Compare relative positions of labeled structures to wild type samples
- 

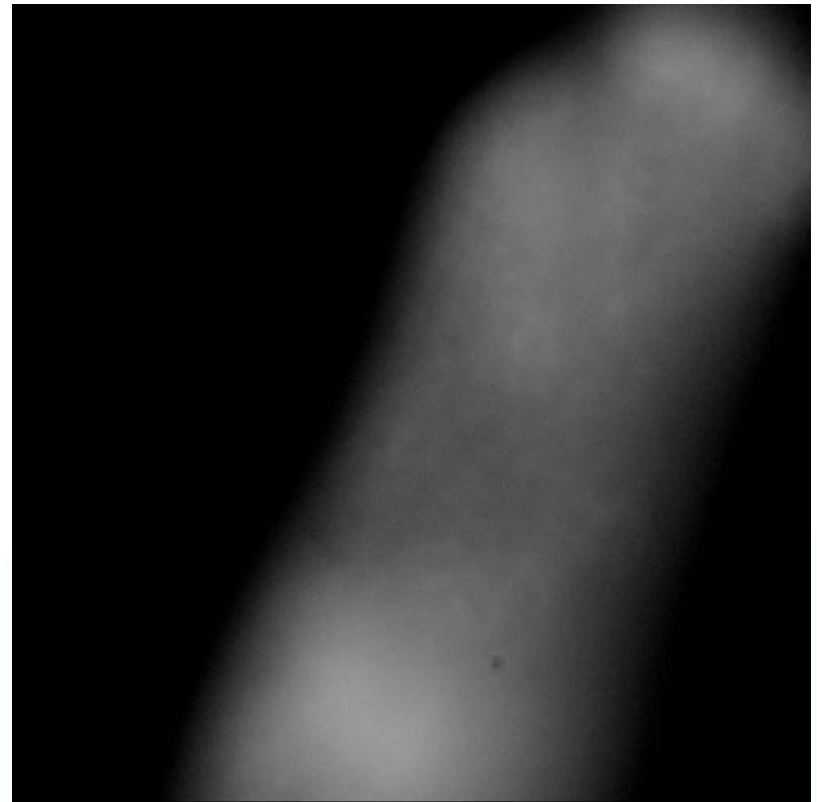
# Progress This Week



Image stacks of t-tubules in mouse cells



Control




TAC 11



# Future Plans



- Further imaging of stained control vs TAC mouse cells with labeled t-tubules and JPH
  - Labeling and imaging of control vs TAC mouse cells for RyR and JPH
  - Labeling and imaging of mouse control cells using rabbit caveolin 3 and RyR
- 

# Cultural Aspect



Watched movies in the Civic Theater during the  
New Zealand International Film Festival

# Acknowledgments

Many thanks to:

- Gabriele Wienhausen, Teri Simas, Peter Arzberger – UCSD PRIME
- Masahiko Hoshijima – UCSD Mentor
- Christian Soeller – Host Mentor
- The University of Auckland School of Medical Sciences
- The National Science Foundation

