

Deployment of Virtual Cluster on a Commercial Cloud Platform for Molecular Docking and Elasticity of the Clusters

Nara Institute of Science and Technology (NAIST), Japan
Katy Pham, 08/13/14

Overview

- Objective: upload a virtual machine that runs a protein-ligand interaction simulating program (Dock6) onto FutureGrid
- Purpose: having Dock6 onto the commercial cloud will allow tasks to be performed cheaply and efficiently
- 3 areas will be investigated:
 - Elasticity of the clusters (Katy)
 - Fault tolerance of the system (Derek)
 - Use of several virtual clusters on various commercial clouds to form a single system (Anthony)

Week 7 Progress

- Fixed an error related to namenode not being connected – we reformatted the filesystem
- Tried to do yarn pseudo-distributed operation, ran into error that the server could not connect. Fixed it by editing the configuration files and adding parameters, now: can connect server, but cannot run the jobs
- Researched and learned more about the differences between each mode in Hadoop (standalone, pseudo-distributed operation and fully-distributed)

Coming up: Next Week's Goals

PRIME 2014

- Try to figure out where the error related to the disconnection of datanode is from
- Clone additional virtual machines in order to set up the cluster for Hadoop in fully-distributed mode
- Be able to run the sample command for the yarn job successfully and correctly
- Set up the cluster and run sample commands to see if Hadoop is correctly working in fully-distributed mode
- Check if Hadoop is correctly installed in the clones of the original virtual machine

Exploring the Culture

PRIME 2014

OBON WEEK 2014: Tokyo. Mount Fuji. Nagoya. Hiroshima. Miyajima Island. Osaka (Summer Sonic)

- **Tokyo** (August 9th-August 12th)
 - Tokyo (August 9th-August 12th)
 - Discovery of Tsukemen, Ramen and Sushi must-go restaurants
 - Tsujiki Fish market
 - Shinjuku, Harajuku areas
- **Mount Fuji** (August 12th-August 13th)
 - Bullet hiking of Mount Fuji
 - 8hours to reach the top, 5hours to get down
 - All-nighter in order to reach the top before sunrise
 - The view was so rewarding and beautiful
- **Nagoya** (August 13th-August 14th)
 - Exploration of Nagoya at night
 - Visit of the TV Tower
 - Trying out Nagoya's food specialities: Tebasaki, Misokatsu, Kishimen soup and Eel
 - Visit of the Toganji Temple

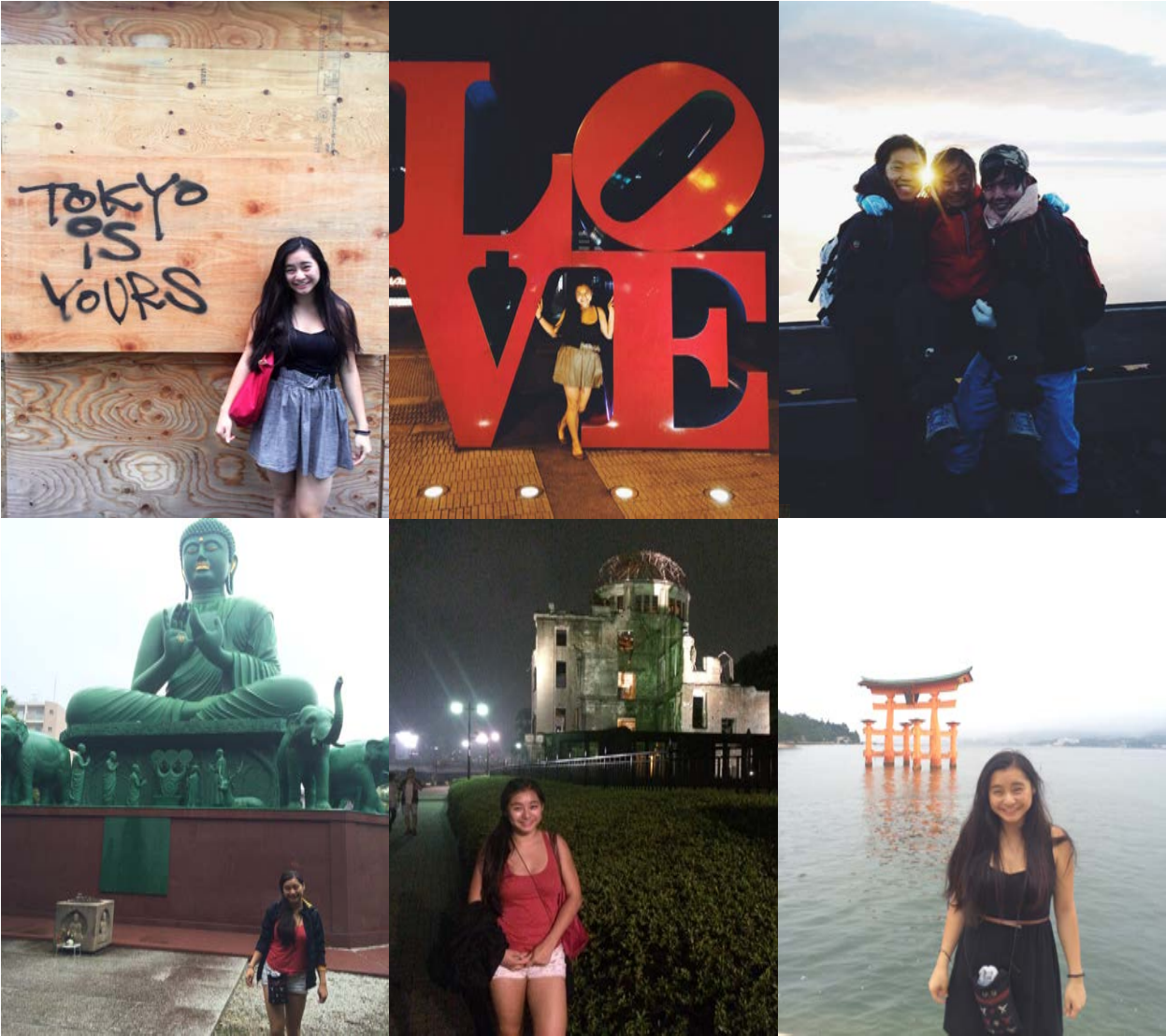
Exploring the Culture

PRIME
2014

- **Hiroshima** (August 14th-August 15th)
 - Visit of Peace Memorial Park
 - Saw the A-Bomb Dome, Children's Memorial Monument, Epicenter,
 - Visit of the Peace Memorial Museum & Memorial dedicated to the Children of Hiroshima
 - Tried out the famous Okonomiyaki-Hiroshima style (with oysters, shrimps and other seafood!)
- **Miyajima** (August 15th)
 - Took the JR Ferry from Hiroshima
 - Ate delicious fresh grilled oysters
 - Saw the famous Torii Gate, Itsukushima shrine, Yamabe Alley, Senjokaku Pagoda
- **Osaka- Summer Sonic 2014 Music Festival** (August 16th-August 17th)
 - Day 1: Saw artists Timeflies, A Great Big World, Mayday, Azelia Banks, BANKS, Ellie Goulding, Avril Lavigne, Pentatonix, Charli XCX, Queen & Adam Lambert and the Pixies
 - Day 2: Reignwolf, CN Blue, Vintage Trouble, Krewella, Twenty One Pilots, Arctic Monkeys & Phoenix

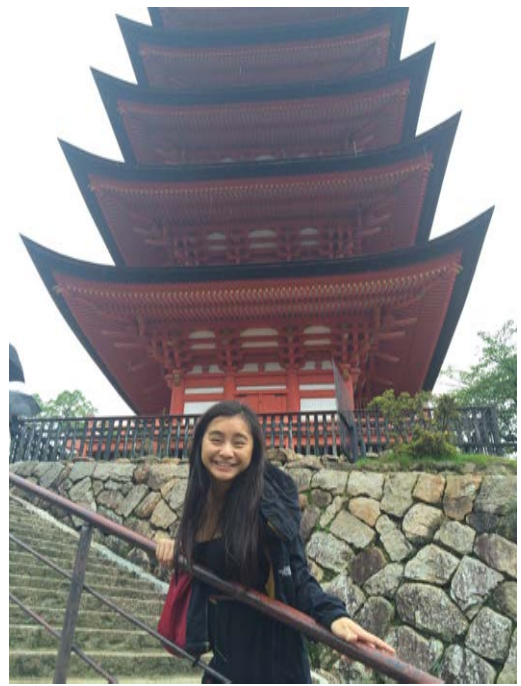
Exploring the Culture

PRIME 2014



Exploring the Culture

PRIME 2014



Exploring the Culture

PRIME 2014



Acknowledgements

- I would like to thank:
 - The graduate students, professors & assistant professors for being so friendly, welcoming and helpful
 - Dr. Haga for his constant guidance and for providing us with this incredible opportunity
 - Ichikawa-Sensei for always answering our questions and teaching us more about Japan
 - The amazing PRIME Staff (Dr. Gabriele Wienhausen – Principal Investigator, Mrs. Teri Simas, Mr. Jim Galvin) for continuous support and guidance
 - Dr. Abbie Celniker for her generous donations that are allowing for me to participate in this program
 - JASSO for the scholarship
 - NAIST for providing the accommodations
 - Karen Rodriguez and Kevin Lam for training us during Spring Quarter
 - Previous PRIME students for their excellent advice